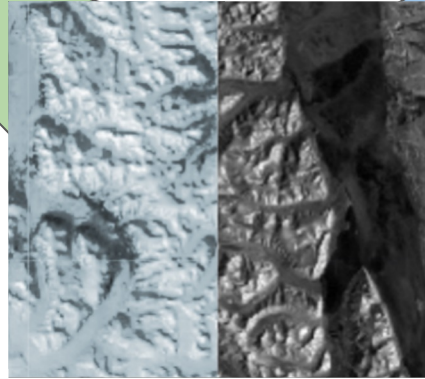


Diferentes sensores a bordo = diferentes informações



Multispectral satellite
Sentinel-2

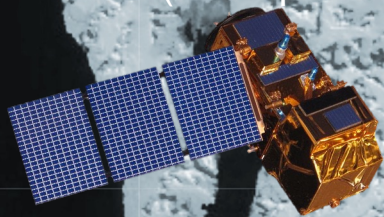
- Dependente de luz
- Dependente de condições atmosféricas
- Fácil de interpretar
- Permite identificar o tipo de superfície e identificar determinadas características



Synthetic Aperture Radar (SAR)
Sentinel-1

- Capacidades durante dia e noite
- Permite ver independentemente das condições da atmosfera
- Permite identificar a 'geometria' da superfície

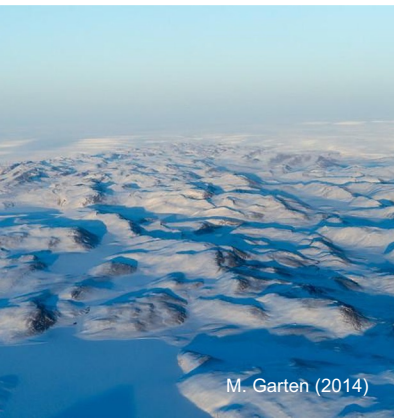
Svalbard (Composto de imagens)
Sentinel-2 (Multispectral Instrument)



Svalbard (Composito de imagens)
Copernicus Sentinel-1 (SAR)

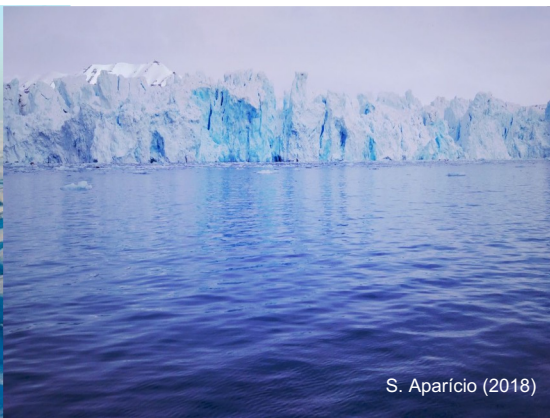


Calotas de gelo



M. Garten (2014)

Glaciares



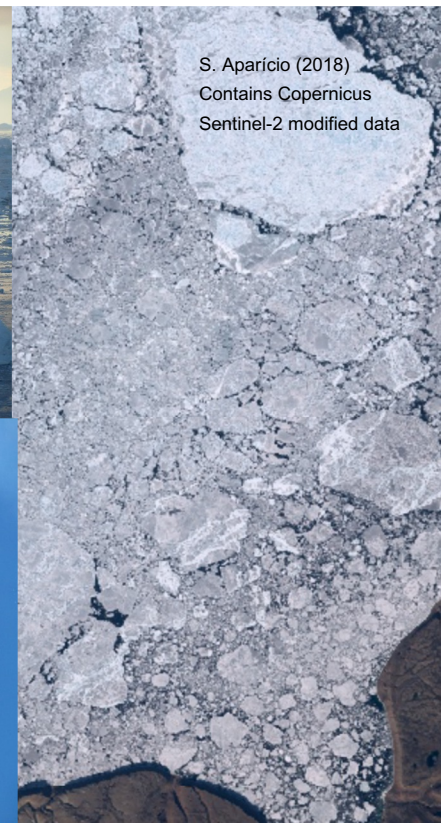
S. Aparício (2018)

Icebergs



S. Aparício (2011)

Gelo marinho



S. Aparício (2018)
Contains Copernicus
Sentinel-2 modified data



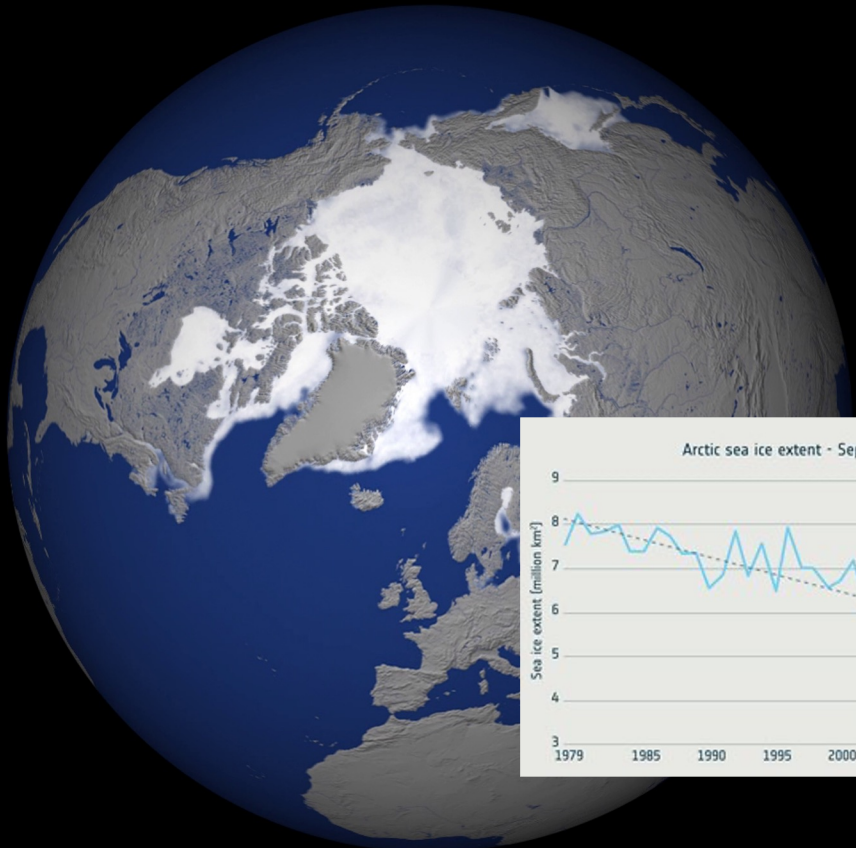
S. Aparício (2010)



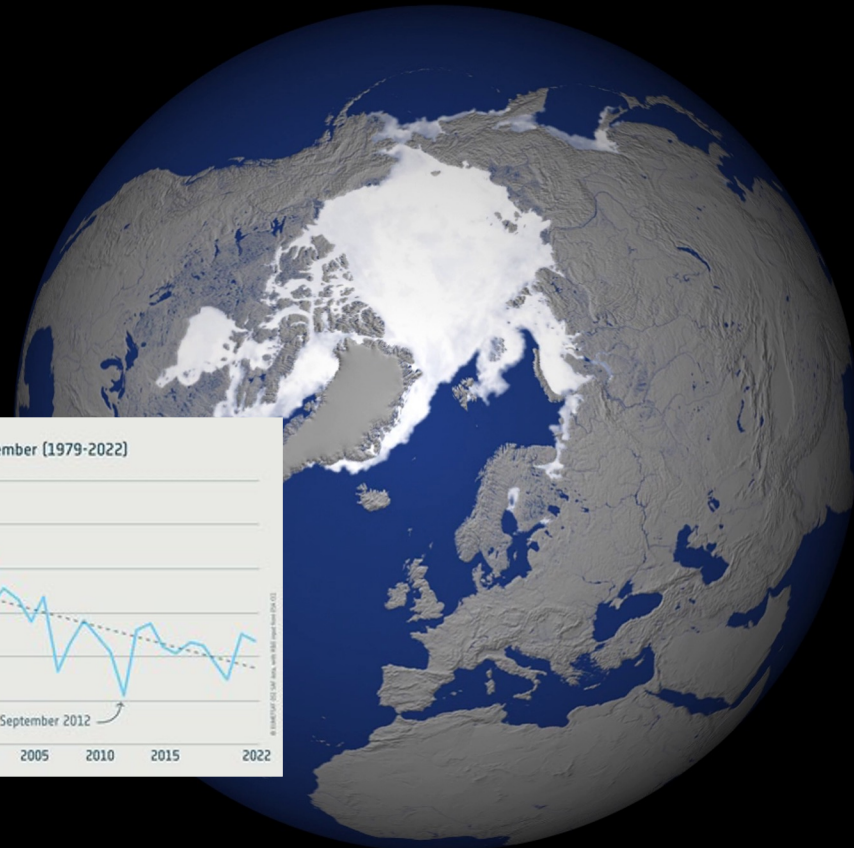
S. Aparício (2018)



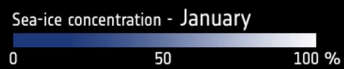
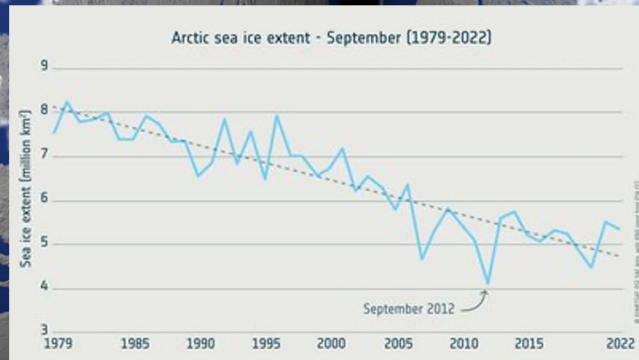
S. Aparício (2011)



1979



2016



© ESA Sea-ice Climate Change Initiative



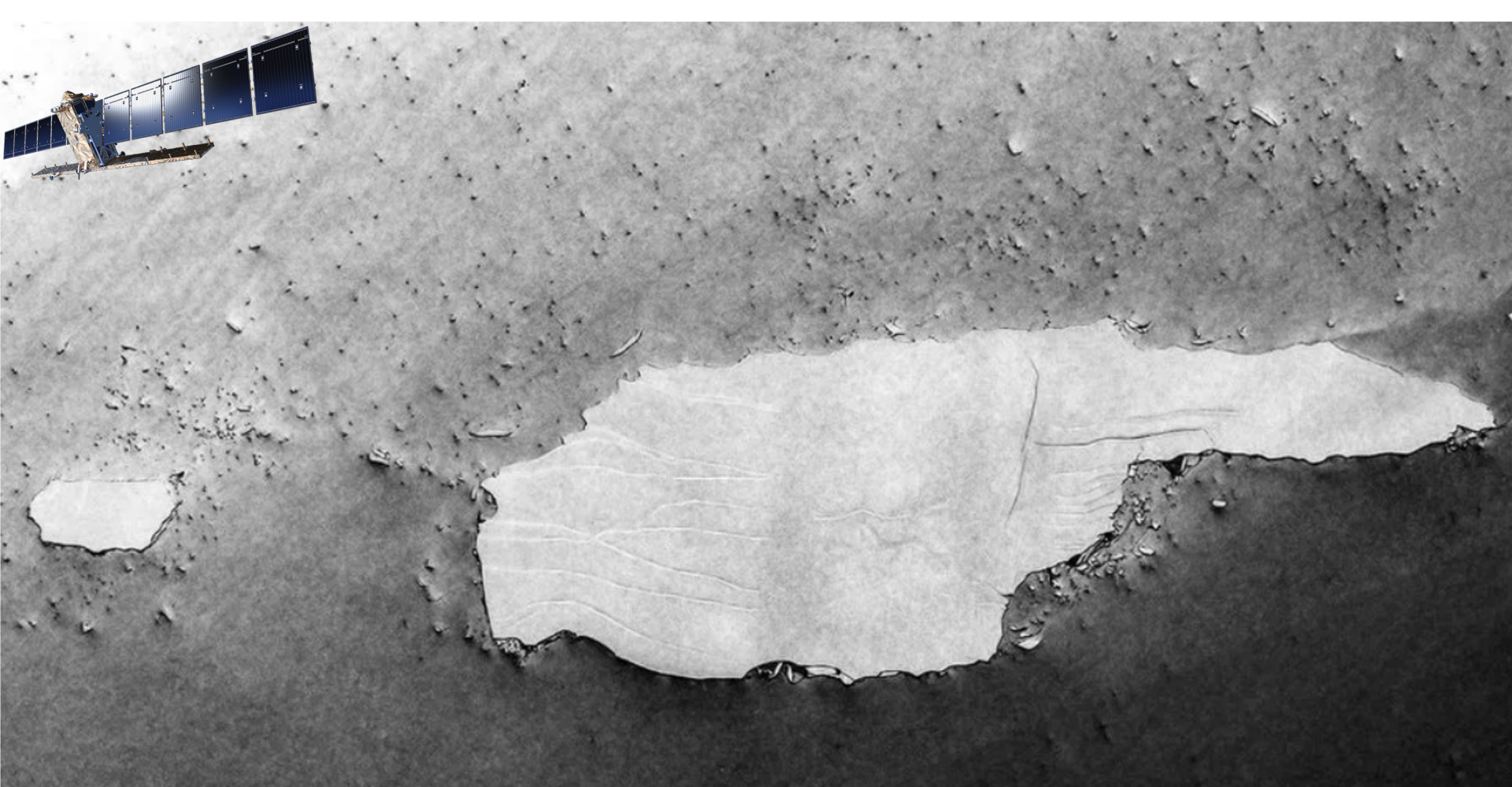
Cryosat-2



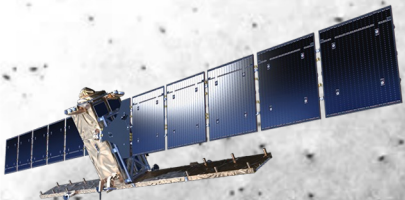
SMOS



https://www.esa.int/ESA_Multimedia/Videos/2020/03/Sea-ice_thickness_and_volume_from_SMOS_and_CryoSat



COPERNICUS DATA 2020 - P.MARKUSE



BBC Sign in Home News Sport Earth Reel

NEWS

Home | Israel-Gaza war | War in Ukraine | Climate | Video | World | UK | Business | Tech | Science

Science

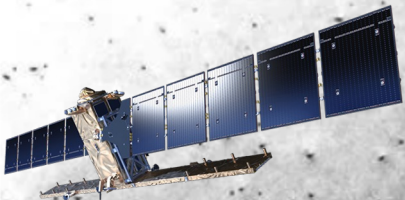
A68: Iceberg that became a social media star melts away

© 18 April 2021



CPL PHIL DYE RAY/CROWN COPYRIGHT ©

The image shows a screenshot of a BBC News article. The article title is "A68: Iceberg that became a social media star melts away". The article is dated 18 April 2021. The main image is a large, blue-tinted iceberg floating in the ocean. The background of the entire image is a grayscale satellite view of the Earth's surface, showing a large, irregularly shaped hole or crater.



BBC Sign in Home News Sport Earth Reel

NEWS

Home | Israel-Gaza war | War in Ukraine | Climate | Video | World | UK | Business | Tech | Science

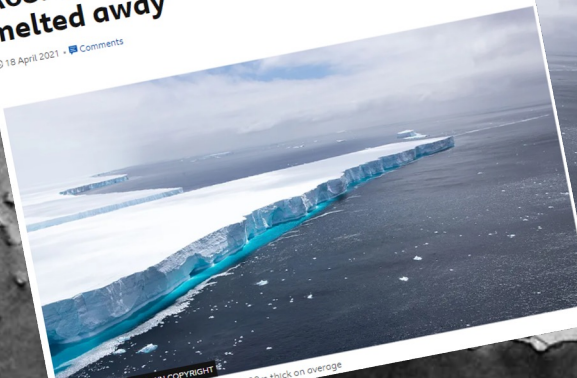
Science

A68: Iceberg that became social media star

newsround

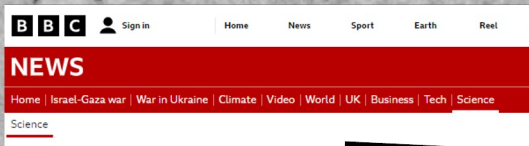
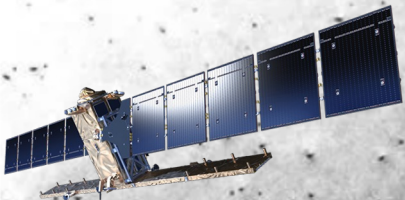
A68: World's biggest iceberg has melted away

© 19 April 2021 • Comments



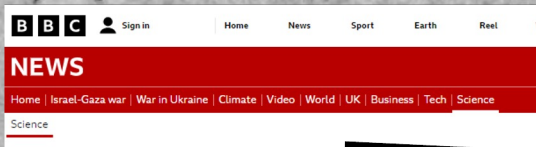
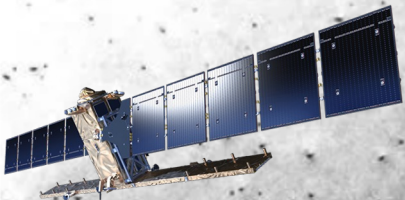
CPL PHIL DYE RAFCROWN COPYRIGHT

Wide but extremely thin: A68 was about 230m thick on average

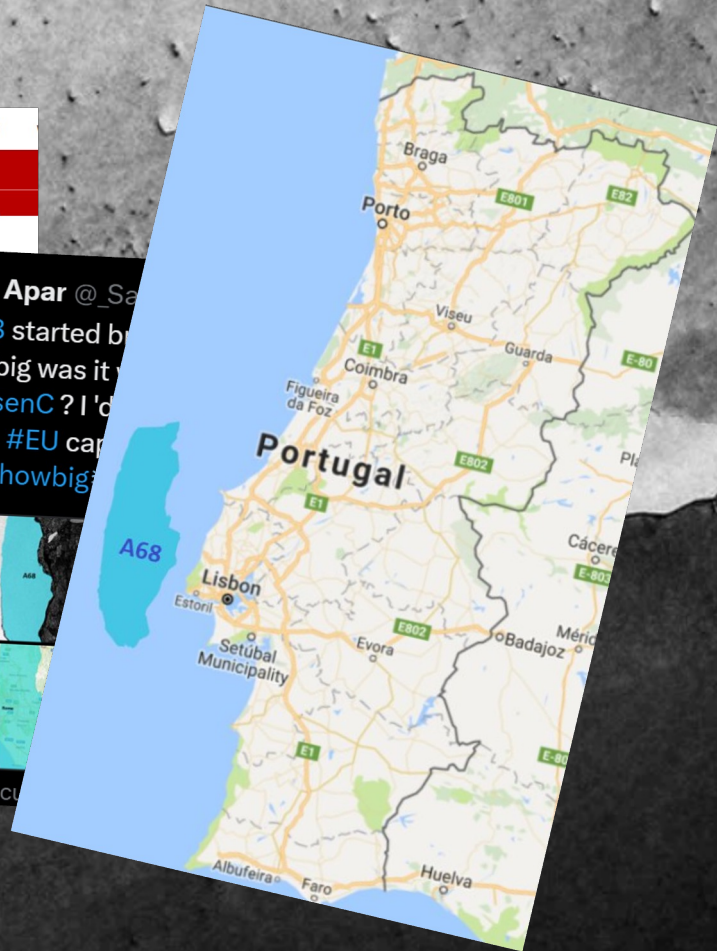
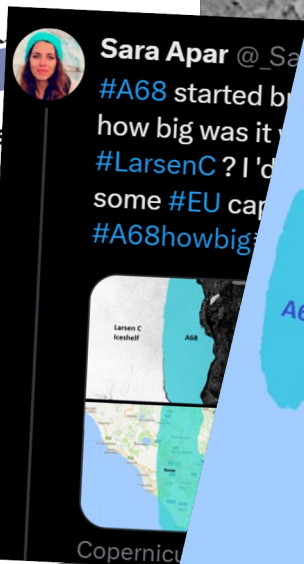


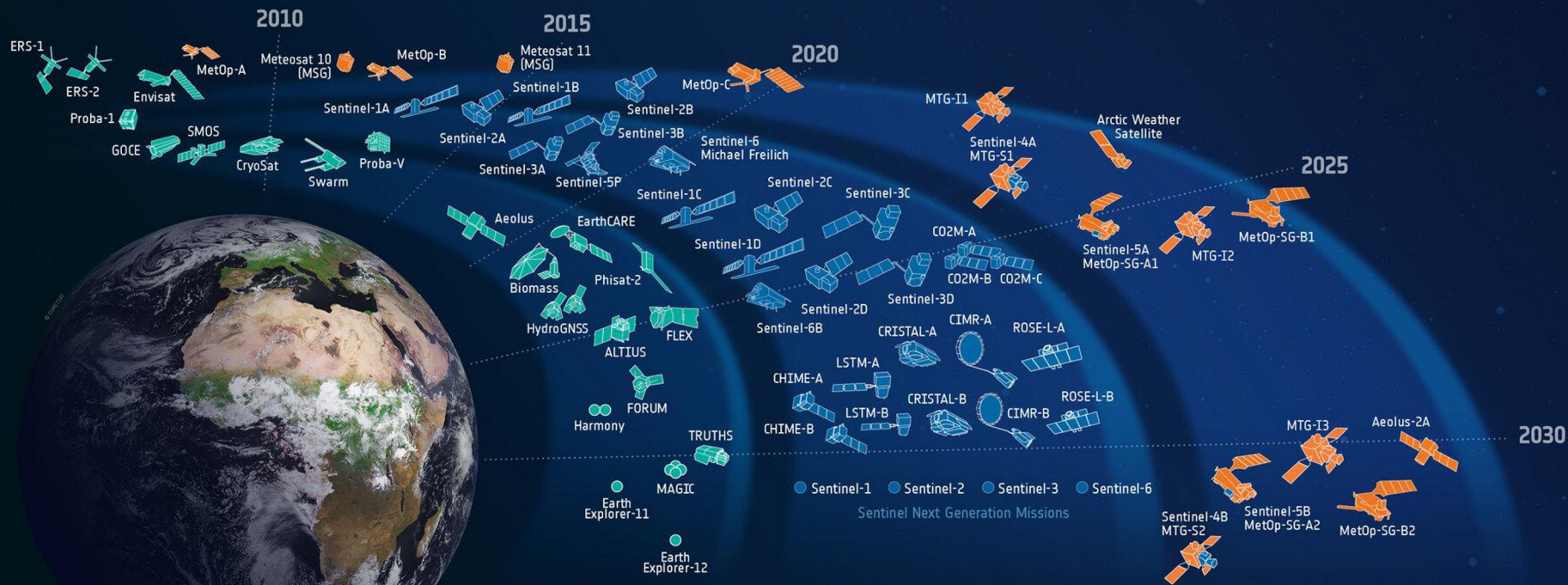
A68: Iceberg that became
media star





A68: Iceberg that became
media star





Science

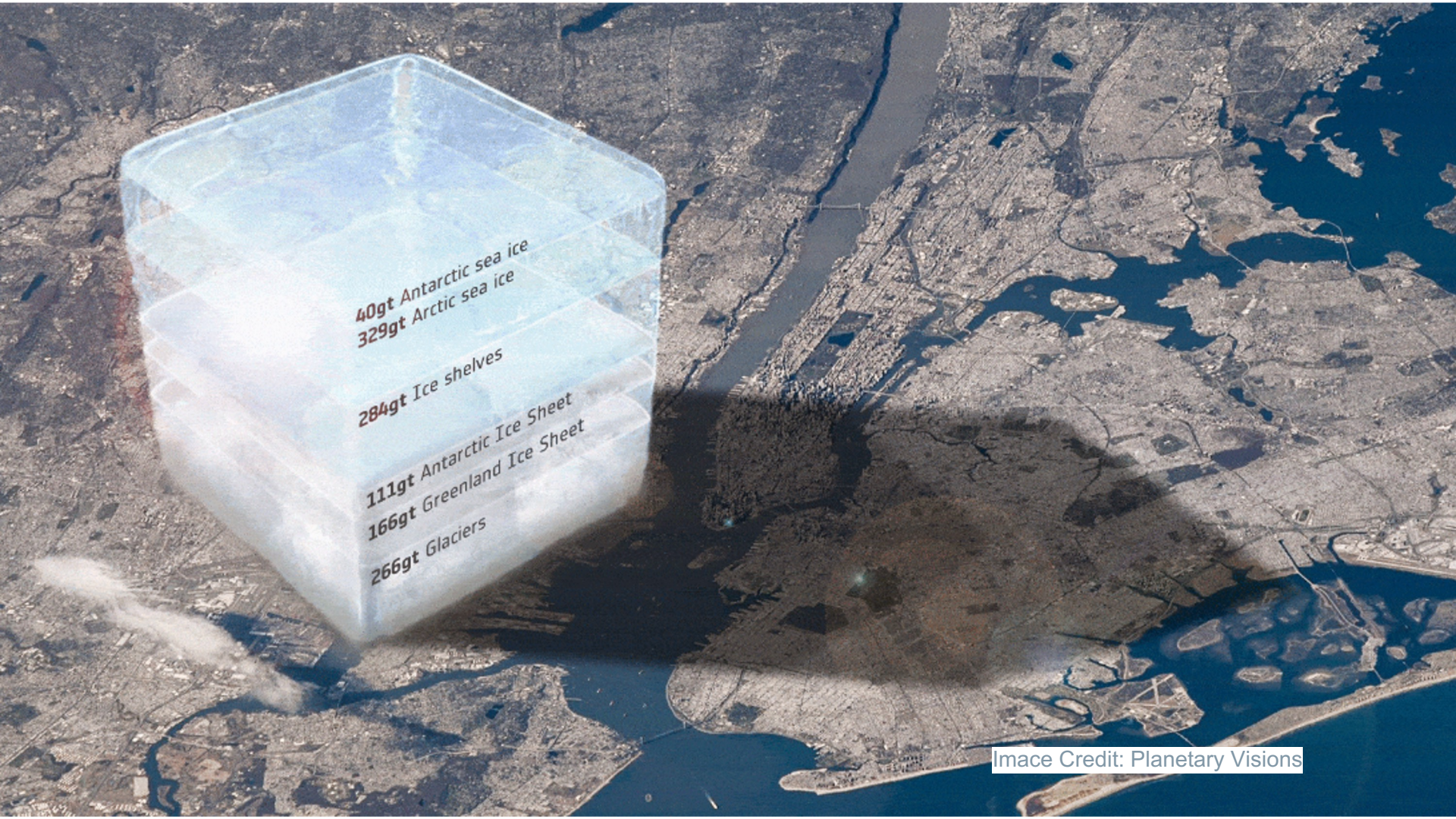


Copernicus



Meteorology





40gt Antarctic sea ice
329gt Arctic sea ice

284gt Ice shelves

111gt Antarctic Ice Sheet

166gt Greenland Ice Sheet

266gt Glaciers