



PORTUGUESE AZULEJOS

**EXPERIMENTAL REPLICATIONS
AND THE QUEST FOR**

YELLOWS

**UMBERTO
VERONESI**





Colégio do Espírito Santo, Évora , século XVII



Igreja de São Roque, Lisboa século XVI



United Nations
Educational, Scientific and
Cultural Organization



Intangible
Cultural
Heritage

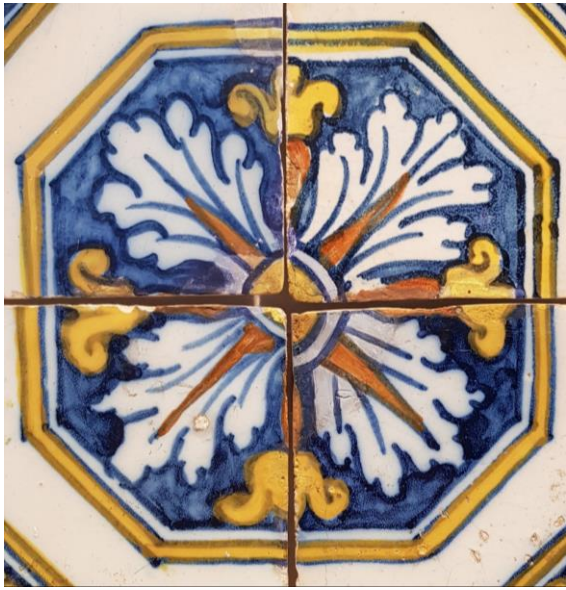


Gruta dos banhos, Sintra, século XVIII

CHROMAz

THE **CHROM**ATIC JOURNEY OF THE PORTUGUESE **AZULEJO**





Lead
Antimony

+

Salt
Tartar
Iron

Tin



Zinc

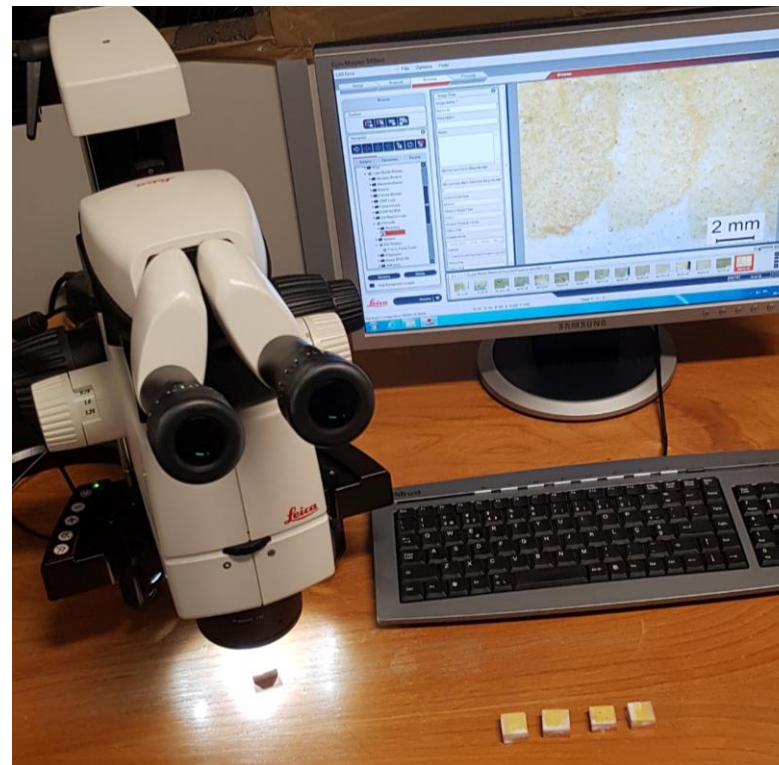


XVI

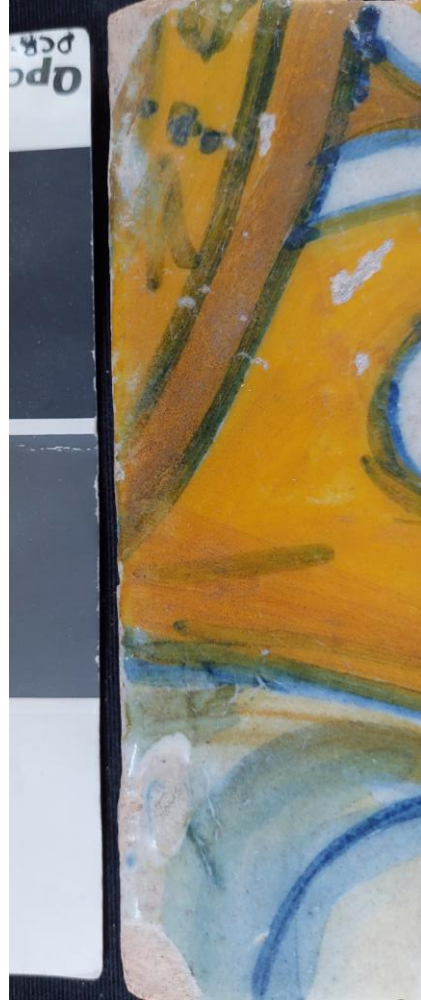


XVII





Composition
Morphology
Structure
Colour





CHROM Az

If you want to know more about the project..

✉ scoentro@fct.unl.pt

📷 [_chrom_az_](#)

🌐 <https://sites.google.com/fct.unl.pt/chromaz/>