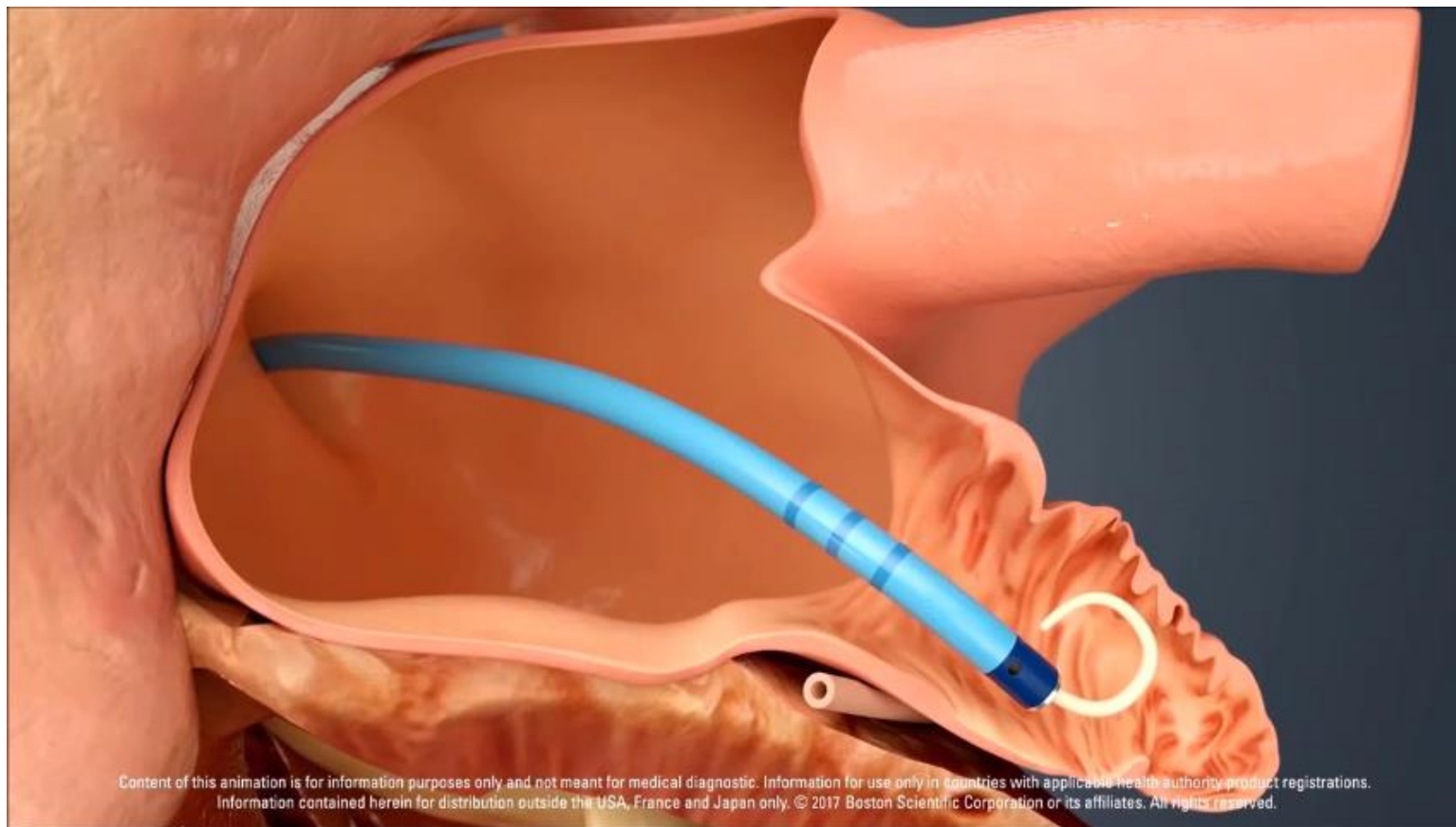
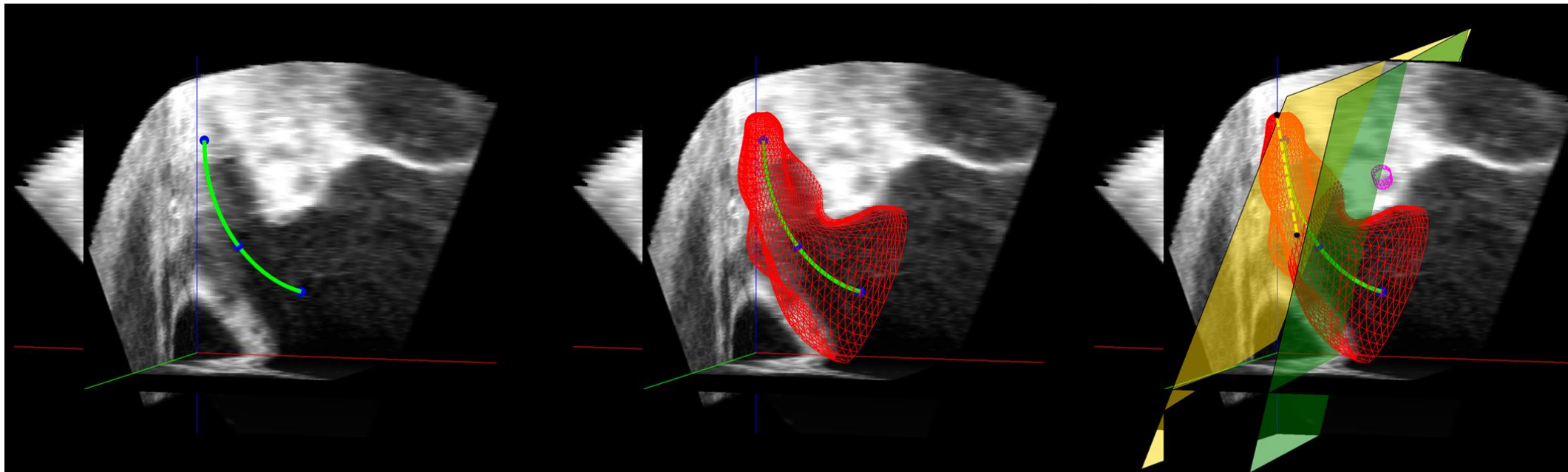


Feasibility and Accuracy of Automated Three-Dimensional Echocardiographic Analysis of Left Atrial Appendage for Transcatheter Closure

Pedro Morais
pmorais@ipca.pt

Encontro Ciência– 17th May 2022





Initialization

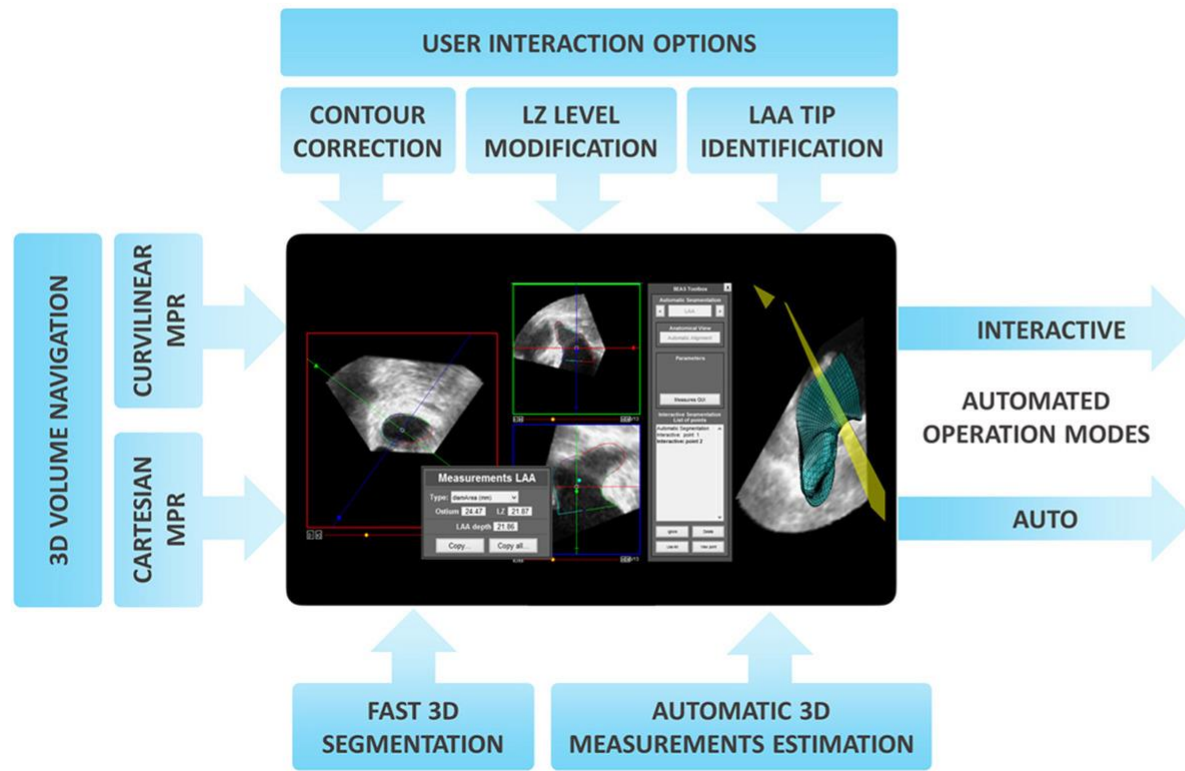
Segmentation

Clinical Measurements

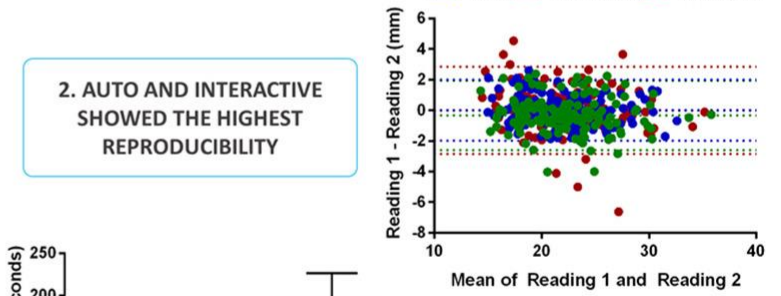
Computational time \approx 25 seconds

Manual analysis \approx 40 minutes

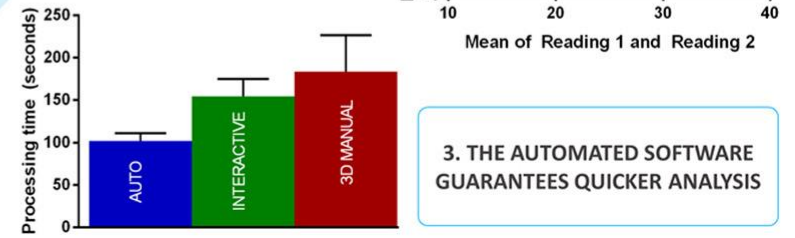
AUTOMATED LAA SOFTWARE TOOL **CLINICAL FINDINGS**



1. THE LAA SOFTWARE IS FEASIBLE AND ACCURATE



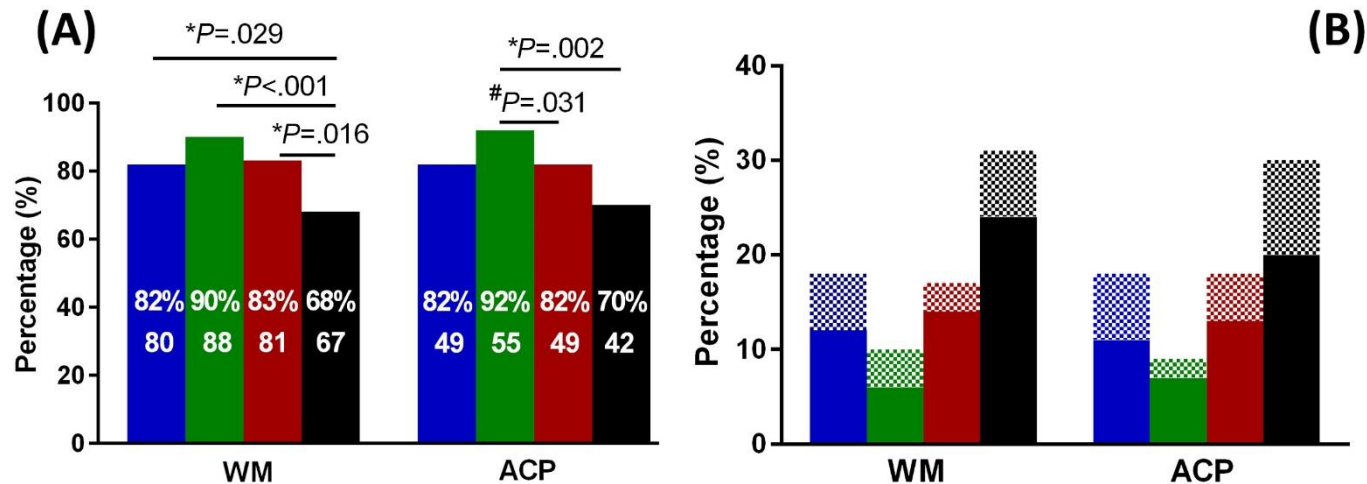
2. AUTO AND INTERACTIVE SHOWED THE HIGHEST REPRODUCIBILITY



3. THE AUTOMATED SOFTWARE GUARANTEES QUICKER ANALYSIS

- Retrospectively evaluated **158 patients** with reference of the **implanted device** throughout the LAAC;
- Difference between **Automated, Interactive** and **Manual Method** was compared;

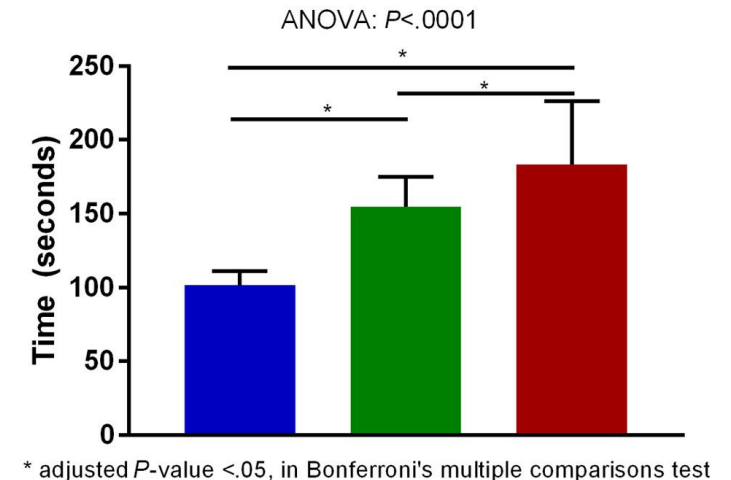
Implanted Device



* $P < .05$, in McNemar's test against 2D Manual Analysis; # $P < .05$, in McNemar's test against 3D Manual Analysis;

■ Auto ■ Interactive ■ 3D Manual Analysis ■ 2D Manual Analysis

Processing Time



Thank You

Pedro Morais
pmorais@ipca.pt

