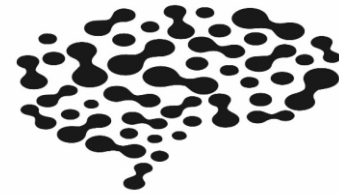




UNIVERSIDADE
LUSÓFONA



escola
de psicologia
e ciências
da vida



HEI-Lab
Digital Human-Environment Interaction Lab

encontro CIÊNCIA'22

Type D Personality: Assessment of the Social Introversion dimension through a virtual reality scenario

Bárbara Gonzalez, Isabel Santos, Pedro Gamito, Fábio Dias,
Jorge Oliveira & Paula Paulino

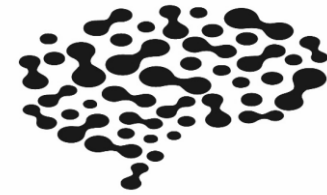
18 de maio de 2022



UNIVERSIDADE
LUSÓFONA



escola
de psicologia
e ciências
da vida



HEI-Lab
Digital Human-Environment Interaction Lab

Type D Personality:

high Negative Affectivity (NA) + high Social Introversion (SI)

SI refers to:

- Perceiving the social world as threatening
- Discomfort, tension and insecurity in social interactions
- Inhibit expression to avoid disapproval by others
- Avoid confrontation, leading to nonexpression
- Display physiological hyperreactivity under conditions of social engagement

(Denollet, 2000; 2005)

Type D personality scale

(Denollet, 2000)

DS¹⁴

Name : Today's date :

Below are a number of statements that people often use to describe themselves. Please read each statement and then **circle** the appropriate **number** next to that statement to indicate your answer. There are no right or wrong answers: Your own impression is the only thing that matters.

0=FALSE 1=RATHER FALSE 2=NEUTRAL 3=RATHER TRUE 4=TRUE

- | | |
|---|--|
| 1 I make contact easily when I meet people - - - 0 1 2 3 4 | 8 I find it hard to start a conversation - - - - - 0 1 2 3 4 |
| 2 I often make a fuss about unimportant things - 0 1 2 3 4 | 9 I am often in a bad mood - - - - - 0 1 2 3 4 |
| 3 I often talk to strangers - - - - - 0 1 2 3 4 | 10 I am a closed kind of person - - - - - 0 1 2 3 4 |
| 4 I often feel unhappy - - - - - 0 1 2 3 4 | 11 I would rather keep other people at a distance - 0 1 2 3 4 |
| 5 I am often irritated - - - - - 0 1 2 3 4 | 12 I often find myself worrying about something - - 0 1 2 3 4 |
| 6 I often feel inhibited in social interactions - - - 0 1 2 3 4 | 13 I am often down in the dumps - - - - - 0 1 2 3 4 |
| 7 I take a gloomy view of things - - - - - 0 1 2 3 4 | 14 When socializing, I don't find the right things to talk about 0 1 2 3 4 |

Scoring of the DS14.

- Scoring of Negative Affectivity and Social Inhibition.
The Negative Affectivity and Social Inhibition scales can be used as continuous variables to assess each of these two personality traits in their own right. Scores on both scales range from 0 - 28, and can be calculated as follows:

Negative Affectivity = sum of scores on items 2 + 4 + 5 + 7 + 9 + 12 + 13.

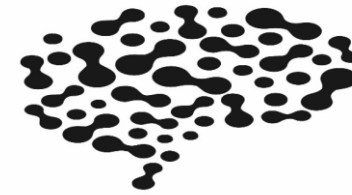
Social Inhibition = sum of scores on items 1 [reversed] + 3 [reversed] + 6 + 8 + 10 + 11 + 14.



UNIVERSIDADE
LUSÓFONA



escola
de psicologia
e ciências
da vida



HEI-Lab
Digital Human-Environment Interaction Lab

Pencil and paper personality assessment

Limitations:

- Lack of ecological validity (Bing et al., 2004; Parsons & Phillips, 2016).
- High facial validity → (underreport/fake)



General goal:



To assess Type D personality through an ecologically valid VR scenario



Specific goal:



To assess the SI dimension:

“Choose your seat in the coffee shop”



- correlate with the scale result;
- physiological and eyetracking indicators

https://drive.google.com/file/d/1p0blu2pRR4VHSYRVd5P-milmlp_ukkdo

mandos se conhece.

e-á pedido que se sente
al, aproxime-se da cadeira
one o gatilho do comando.